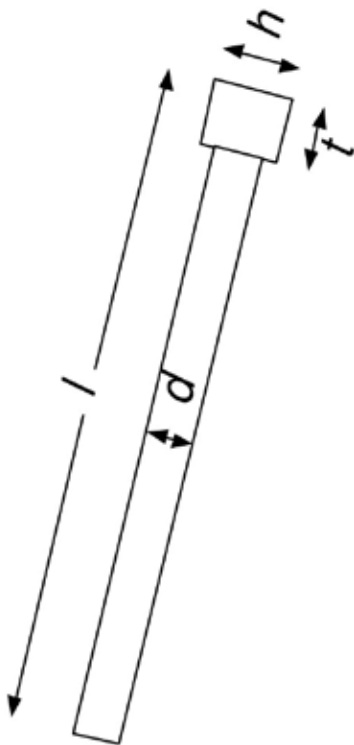
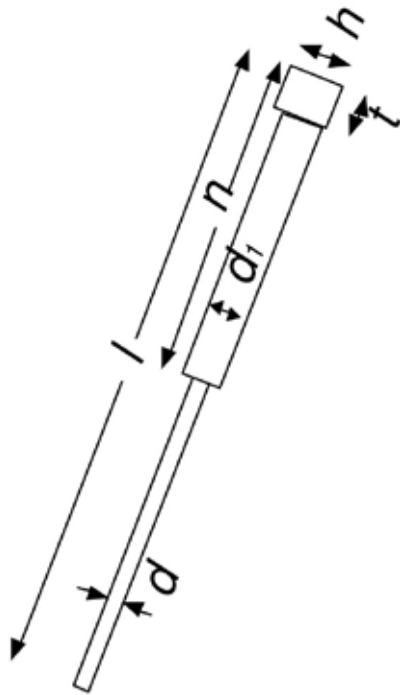


# EJECTOR PINS

Matl. = SKD61 = H13 / Hardness = HV900 Surface, & HRC 42-47 Inside



	<i>Nitrided</i>							
	<i>d</i>	<i>d1</i>	<i>l</i>			<i>n</i>	<i>h</i>	<i>t</i>
			100	150	250			
Stepped Metric	1.0	3.0	KNZ3100	KNZ3115		25	6	4
	1.5	3.0	KNZ3105	KNZ3120		25	6	4
	2.0	3.0	KNZ3110	KNZ3125		25	6	4
	2.5	3.0		KNZ3126		25	6	4
	1.0	3.0		KNZ3130		50	6	4
	1.5	3.0		KNZ3135	KNZ3150	50	6	4
	2.0	3.0		KNZ3138	KNZ3155	50	6	4
	2.5	3.0		KNZ3140	KNZ3160	50	6	4
Stepped Imperial	3/64	1/8		KNZ4505		1/2	1/4	1/8
	1/16	1/8		KNZ4510		1	1/4	1/8

	<i>Nitrided</i>						<i>Un-nitrided*</i>	
	<i>d</i>	<i>l</i>				<i>h</i>	<i>t</i>	<i>l</i>
		150	250	350	450			250
Straight Metric	1.0	KNZ3170				6	4	-
	1.5	KNZ3175				6	4	-
	2.0	KNZ3180	KNZ3500			6	4	-
	2.1		KNZ3501			6	4	-
	2.5	KNZ3185	KNZ3505	KNZ3795		6	4	-
	2.6		KNZ3506			6	4	-
	3.0	KNZ3190	KNZ3510	KNZ3800	KNZ4100	6	4	KNZ4803A
	3.1		KNZ3511			6	4	-
	3.5	KNZ3195	KNZ3515	KNZ3805		7	4	-
	4.0	KNZ3200	KNZ3520	KNZ3810	KNZ4120	8	6	KNZ4804A
	4.1		KNZ3521			8	6	-
	4.5	KNZ3205	KNZ3525	KNZ3815		9	6	-
	5.0	KNZ3210	KNZ3530	KNZ3820	KNZ4130	9	6	KNZ4805A
	5.1		KNZ3531			9	6	-
	5.5	KNZ3215	KNZ3535			10	6	-
	6.0	KNZ3220	KNZ3540	KNZ3830	KNZ4140	10	6	KNZ4806A
	6.1		KNZ3541			10	6	-
	6.5	KNZ3225	KNZ3545			11	6	-
	7.0	KNZ3230	KNZ3550	KNZ3840	KNZ4150	11	6	-
	7.5	KNZ3235	KNZ3555			13	8	-
	8.0	KNZ3280	KNZ3560	KNZ3850	KNZ4160	13	8	KNZ4808A
	8.1		KNZ3561			13	8	-
	8.5	KNZ3285	KNZ3565	KNZ3855		14	8	-
	9.0	KNZ3290	KNZ3570	KNZ3860	KNZ4170	14	8	-
	9.5		KNZ3575			15	8	-
10.0	KNZ3300	KNZ3580	KNZ3870	KNZ4180	15	8	KNZ4810A	
10.1		KNZ3581			15	8	-	
11.0		KNZ3590			17	8	-	
12.0	KNZ3320	KNZ3600	KNZ3890	KNZ4200	17	8	KNZ4812A	
12.1		KNZ3601			17	8	-	
12.5		KNZ3605			17	8	-	
13.0		KNZ3610			18	8	-	
13.1		KNZ3611			19	8	-	
14.0	KNZ3340	KNZ3620	KNZ3910	KNZ4220	19	8	KNZ4814A	
15.0		KNZ3630			20	8	-	
16.0	KNZ3360	KNZ3640	KNZ3930	KNZ4240	21	8	KNZ4816A	
18.0		KNZ3660			23	8	KNZ4818A	
20.0	KNZ3400	KNZ3680	KNZ3970	KNZ4280	25	8	KNZ4820A	
25.0	KNZ3405	KNZ3685	KNZ3975	KNZ4290	30	8	-	
Straight Imperial	1/8	KNZ4550				1/4	1/8	
	5/32	KNZ4555				9/32	5/32	
	3/16	KNZ4560				3/8	3/16	
	1/4	KNZ4565	KNZ4600			7/16	3/16	
	5/16	KNZ4570	KNZ4605			1/2	1/4	
	3/8	KNZ4580	KNZ4610			5/8	1/4	
	7/16	KNZ4585	KNZ4615			11/16	1/4	
	1/2	KNZ4590	KNZ4620			3/4	1/4	KNZ4813
5/8	KNZ4595				7/8	1/4		

Other sizes of pins and sleeves also available on indent.

\*Un-nitrided pins are from FDAC(=H11) material with a through hardness of 35-40 HRC, and so can be machined to desired shape, then nitrided without further heat treatment.